

Light efficiency:

80 Lumen/Watt

Light quality:

CRI: 81.5

Color temperature:

3055 K

Output: 3267 lm

Peak: 6120 cd

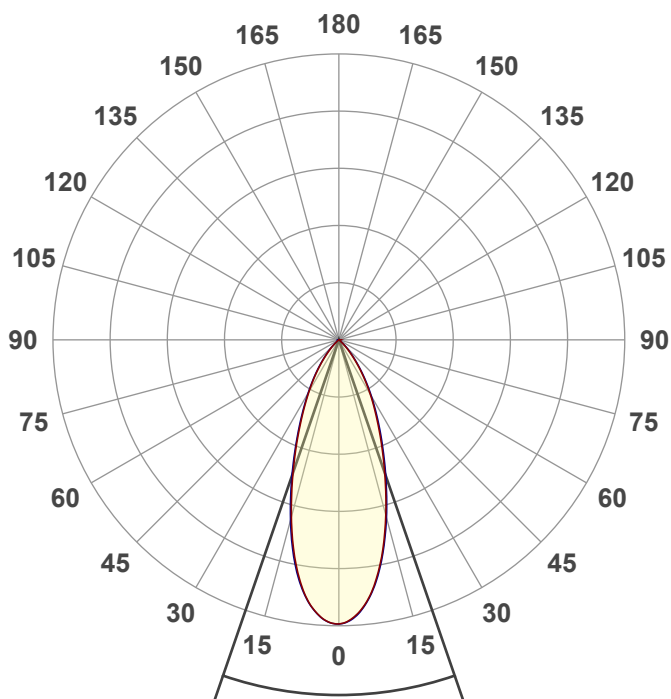
Power: 41.0 W

PF: 0.99



NU3-RD-SW-40LM-30K-80-40D-HET-WH-WH

Date and time:
2/21/2023 9:34:59 AM



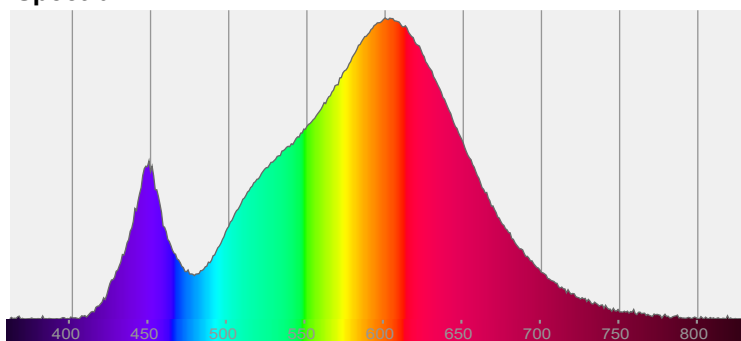
Beam angle

38.1°

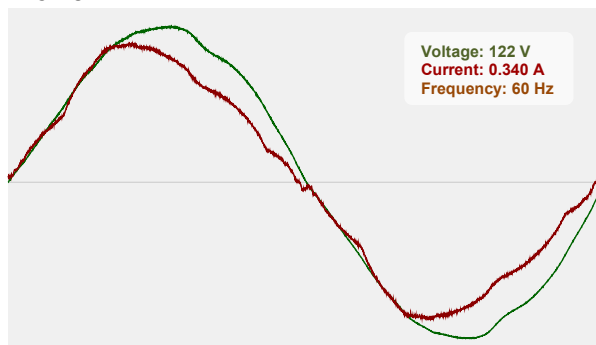


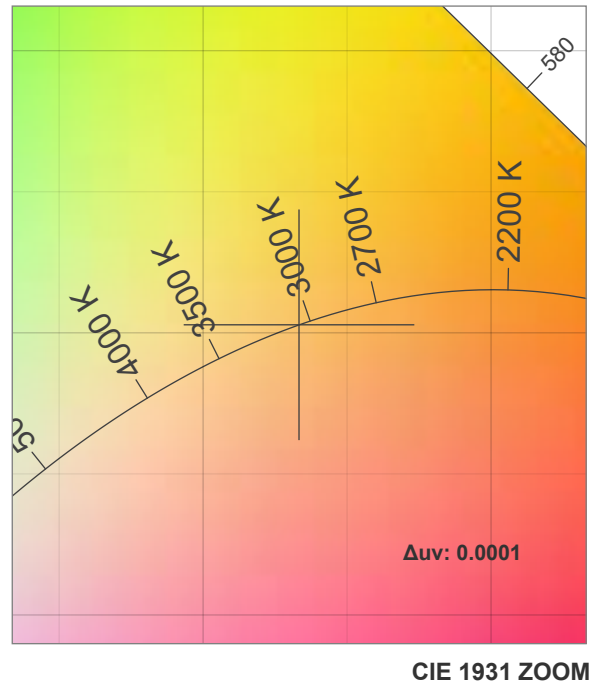
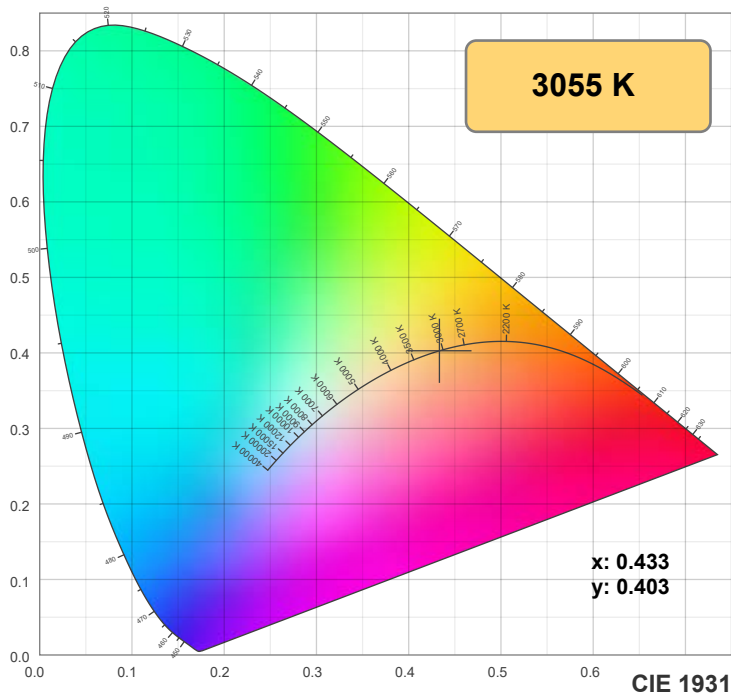
CIE 1931
x: 0.433
y: 0.403

Spectra

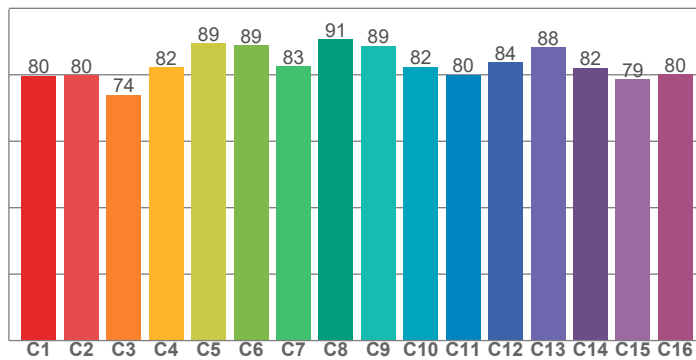


Power

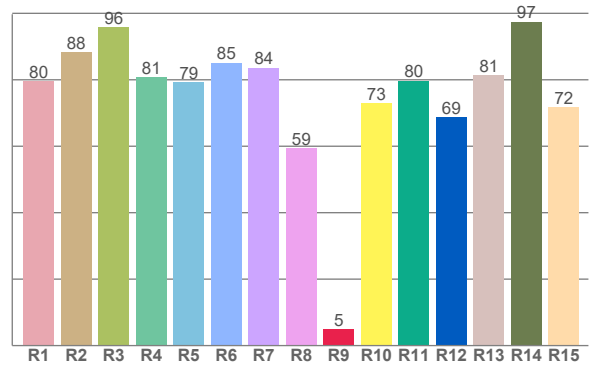




TM30: 83.1



CRI: 81.5 (R1-R8)



CRI R values, only R1-R8 are used to calculate final CRI value

R1	R2	R3	R4	R5	R6	R7	R8	R9	R10	R11	R12	R13	R14	R15
79.6	88.3	95.7	80.7	79.4	85.2	83.6	59.5	4.9	73.0	79.7	68.7	81.4	97.5	71.8

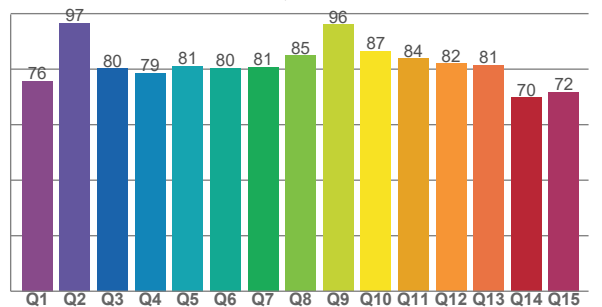
TM30 C values, 16 binned values out of total of 99 C values

C1	C2	C3	C4	C5	C6	C7	C8	C9	C10	C11	C12	C13	C14	C15	C16
79.7	79.8	74.0	82.2	89.4	88.9	82.5	90.7	88.8	82.4	80.0	83.7	88.3	82.2	78.6	80.1

CQS Q values

Q1	Q2	Q3	Q4	Q5	Q6	Q7	Q8	Q9	Q10	Q11	Q12	Q13	Q14	Q15
75.8	96.5	80.3	78.6	81.2	80.4	80.8	84.9	96.1	86.6	83.8	82.0	81.4	69.8	71.7

CQS: 80.5



Color parameters

Color temperature	Color rendering index	Red component	Color fidelity	Color gamut	Color quality scale	Color coordinate cie 1931	Color coordinate cie 1931	Color coordinate	Color coordinate	Color deviation from black body
CCT	CRI	CRI R9	TM30 Rf	TM30 Rg	CQS	x	y	u	v	Δuv
3055 K	81.5	4.9	83.1	97.8	80.5	0.433	0.403	0.249	0.347	0.0001

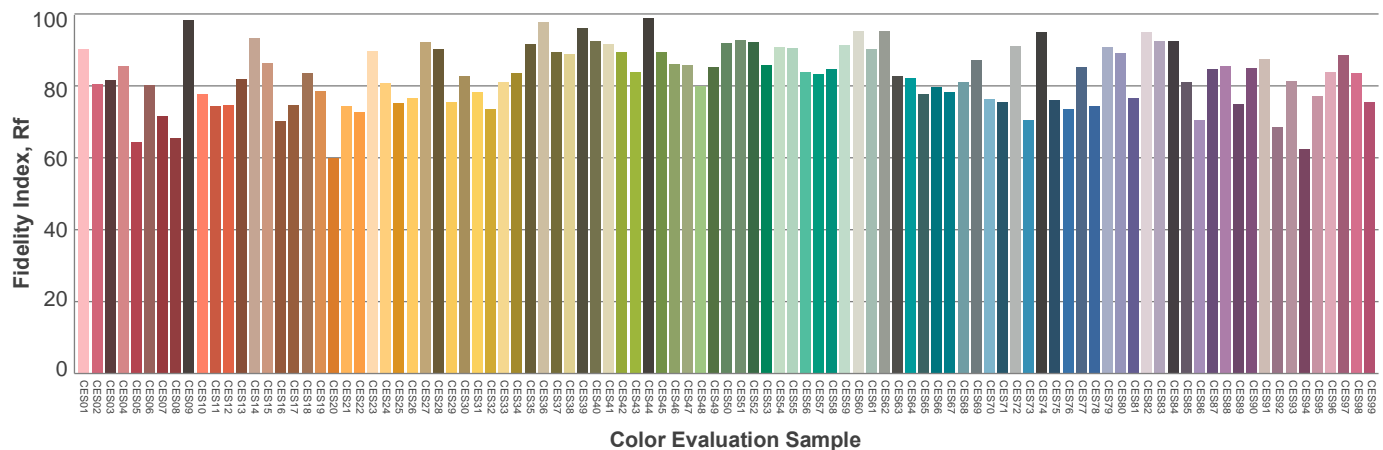
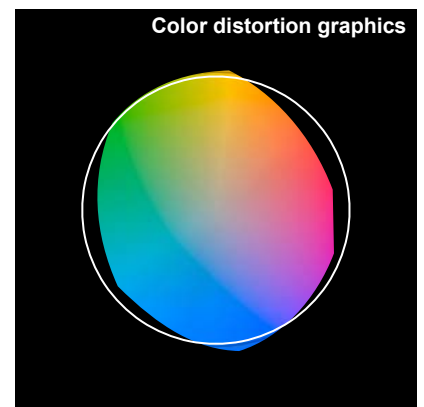
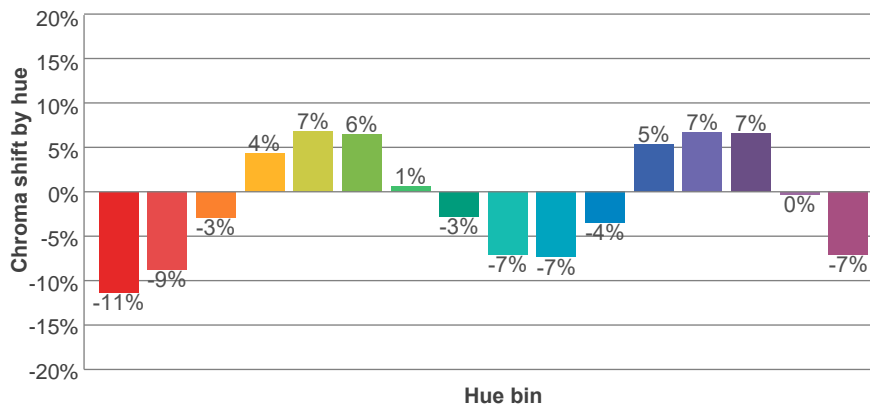
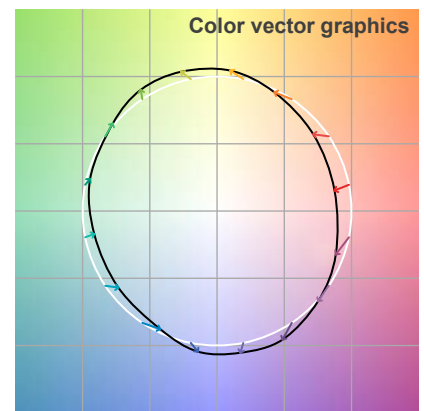
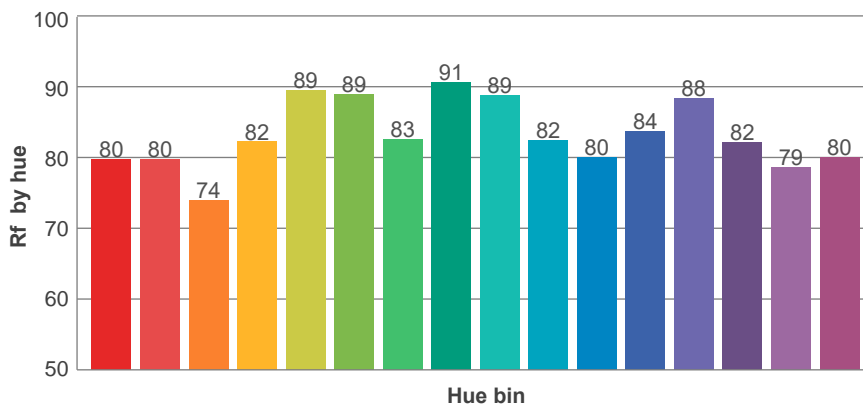
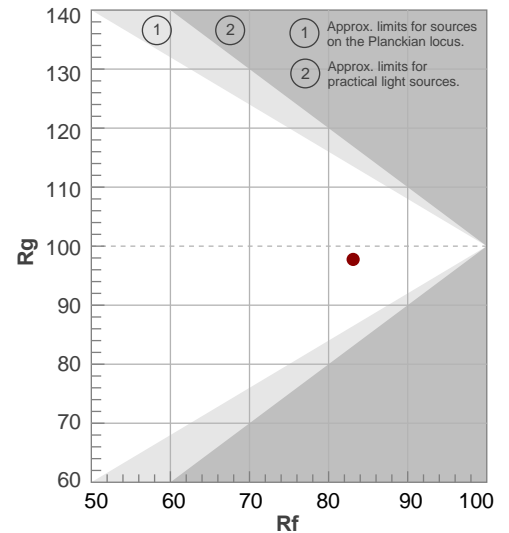
Rf 83.1

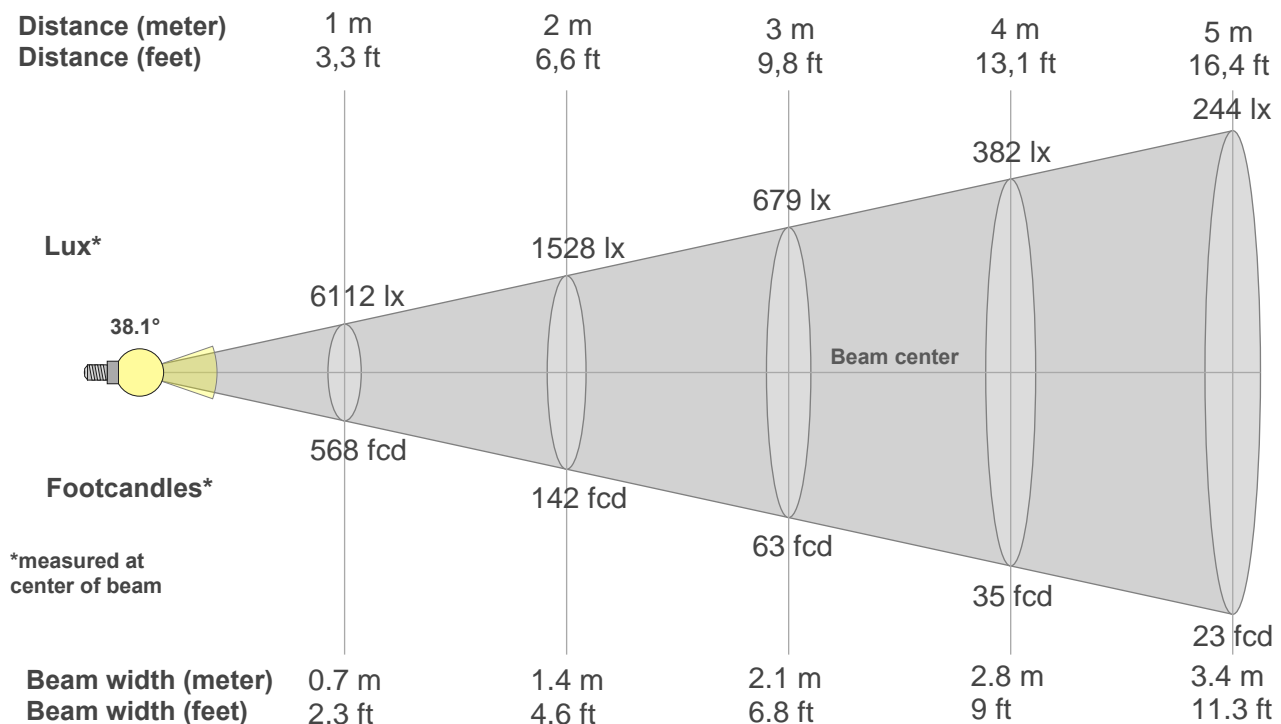
Fidelity index Rf

Rg 97.8

Gamut index Rg

Hue Bin	R _f	Graphic shifts (%)	
		Chroma	Hue
1	80	-11%	-2%
2	80	-9%	8%
3	74	-3%	14%
4	82	4%	11%
5	89	7%	6%
6	89	6%	-3%
7	83	1%	-11%
8	91	-3%	-5%
9	89	-7%	-1%
10	82	-7%	7%
11	80	-4%	14%
12	84	5%	6%
13	88	7%	-4%
14	82	7%	-13%
15	79	0%	-14%
16	80	-7%	-14%





Beam intensities from 1-20m

1m	2m	3m	4m	5m	6m	7m	8m	9m	10m	11m	12m	13m	14m	15m	16m	17m	18m	19m	20m
3.3ft	6.6ft	9.8ft	13.1ft	16.4ft	19.7ft	23ft	26.2ft	29.5ft	32.8ft	36.1ft	39.4ft	42.7ft	45.9ft	49.2ft	52.5ft	55.8ft	59.1ft	62.3ft	65.6ft
6112lx	1528lx	679lx	382lx	244lx	170lx	125lx	95lx	75lx	61lx	51lx	42lx	36lx	31lx	27lx	24lx	21lx	19lx	17lx	15lx
567.8fcd	142fcd	63.1fcd	35.5fcd	22.7fcd	15.8fcd	11.6fcd	8.9fcd	7fcd	5.7fcd	4.7fcd	3.9fcd	3.4fcd	2.9fcd	2.5fcd	2.2fcd	2fcd	1.8fcd	1.6fcd	1.4fcd

Intensities in 0° c-plane

0°	2°	4°	6°	8°	10°	12°	14°	16°	18°	20°	22°	24°	26°	28°	30°	32°	34°	36°	38°
6112	6045	5896	5674	5366	4992	4578	4127	3679	3240	2837	2469	2136	1844	1587	1351	1133	930	748	585
100%	99%	96%	93%	88%	82%	75%	68%	60%	53%	46%	40%	35%	30%	26%	22%	19%	15%	12%	10%

Intensities in 90° c-plane

0°	2°	4°	6°	8°	10°	12°	14°	16°	18°	20°	22°	24°	26°	28°	30°	32°	34°	36°	38°
6112	6057	5919	5688	5390	5027	4615	4179	3738	3306	2906	2534	2207	1910	1642	1400	1181	978	792	628
100%	99%	97%	93%	88%	82%	76%	68%	61%	54%	48%	41%	36%	31%	27%	23%	19%	16%	13%	10%

Intensities in 180° c-plane

0°	2°	4°	6°	8°	10°	12°	14°	16°	18°	20°	22°	24°	26°	28°	30°	32°	34°	36°	38°
6112	6078	5951	5751	5459	5083	4654	4188	3711	3252	2821	2437	2086	1780	1517	1285	1077	888	713	558
100%	99%	97%	94%	89%	83%	76%	69%	61%	53%	46%	40%	34%	29%	25%	21%	18%	15%	12%	9%

Intensities in 270° c-plane

0°	2°	4°	6°	8°	10°	12°	14°	16°	18°	20°	22°	24°	26°	28°	30°	32°	34°	36°	38°
6112	6084	5958	5757	5483	5128	4712	4257	3785	3326	2891	2496	2143	1832	1561	1322	1110	921	747	591
100%	100%	97%	94%	90%	84%	77%	70%	62%	54%	47%	41%	35%	30%	26%	22%	18%	15%	12%	10%

Beam angle 50%	Field angle 10%	Cutoff angle 2,5%	Intensity ratio in 120° cone	Intensity ratio in 90° cone
38.1°	75.4°	92.1°	99.2%	97.2%